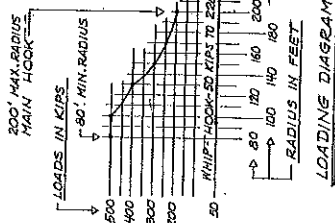
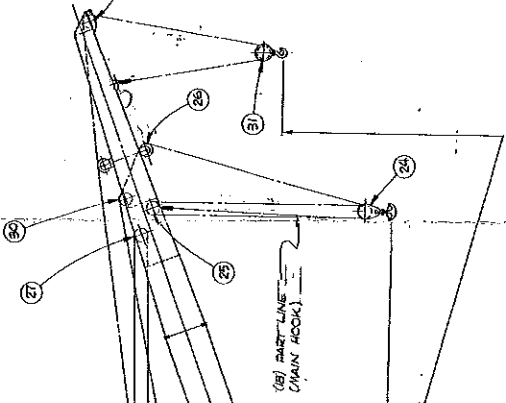


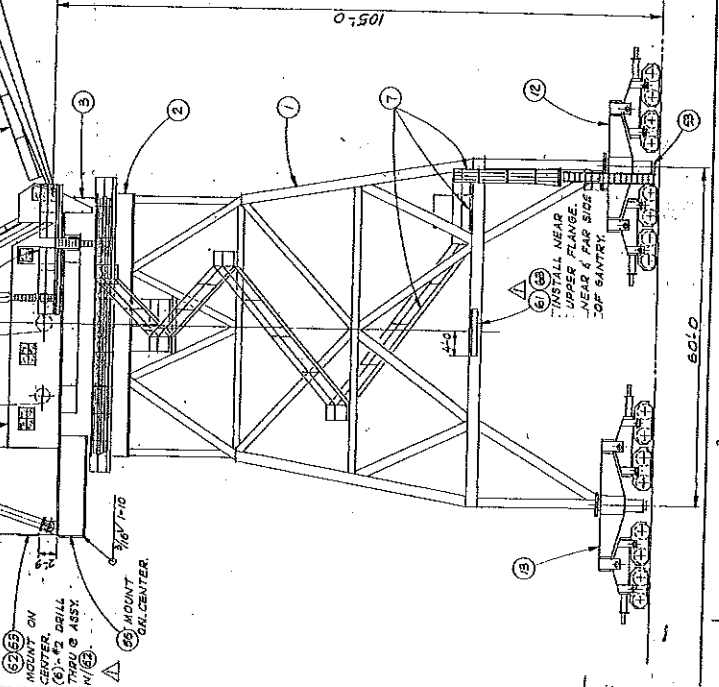
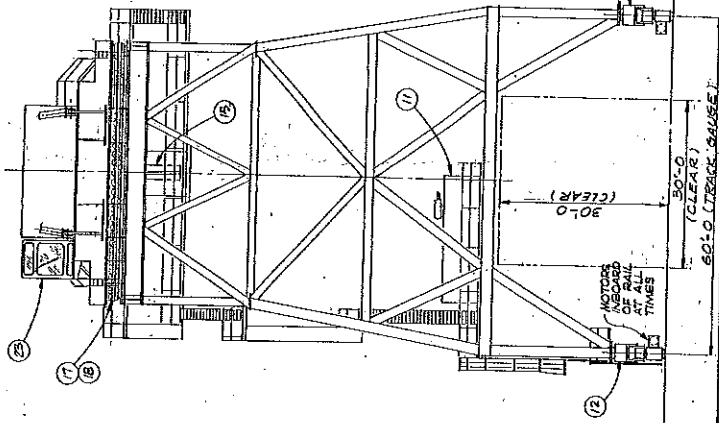
BILL OF MATERIAL
 PART NO. 25
 QUANTITY 1
 DRAWING NO. 051790

LINE OF ROTATION

50'-0" TRAILING



HOOK TRAVEL: 180'-0" ABOVE RAIL @ 200' RAD.
 40'-0" BELOW RAIL @ ALL RAD.
 HOOK TRAVEL: 150'-0" ABOVE RAIL @ 228' RAD.
 40'-0" BELOW RAIL @ ALL RAD.



051790

PERFORMANCE AND CHARACTERISTICS

This "WASHINGTON" gantry-mounted revolving crane, Model No. 45-225-105, is designed to operate at the following speeds and load limits:

- Maximum Rated Load to 100 Foot Radius (Main Hook) . . . 250 Tons
- Maximum Rated Load at All Radii (Whip Hook) 25 Tons
- Gantry Travel, with Full Load 100 F.P.M.
- Swing Travel, with Full Load 0.75 R.P.M.
- Main Hoist, with Full Load 270 F.P.M. at Drum
(15 F.P.M. Hook Speed)
- Whip Hoist, with Full Load 350 F.P.M. at Drum
(175 F.P.M. Hook Speed)
- Boom Hoist, with Full Load 160 F.P.M. at Drum

LOAD/RADIUS CURVE:

